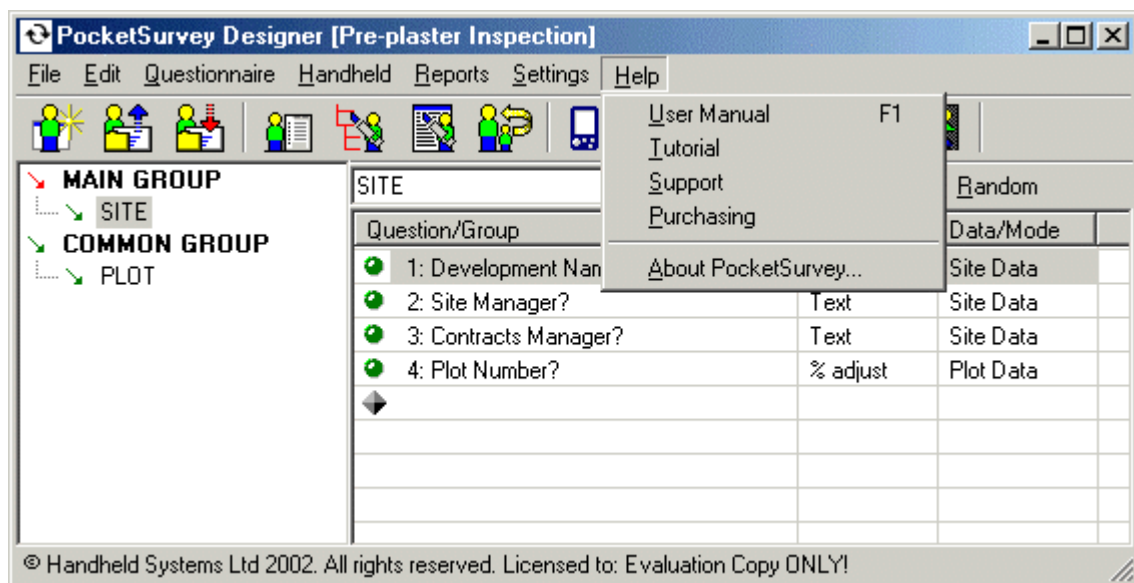


Chapter 12: Menu | Help

The **HELP** menu, shown below has options for launching the online user manual, the online tutorial, support information, purchasing information, and general information about the PocketSurvey program. You can learn more about each option in this chapter.

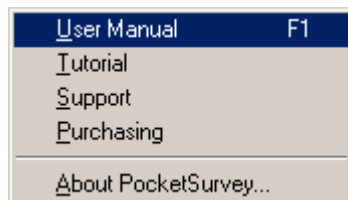


Chapter Contents

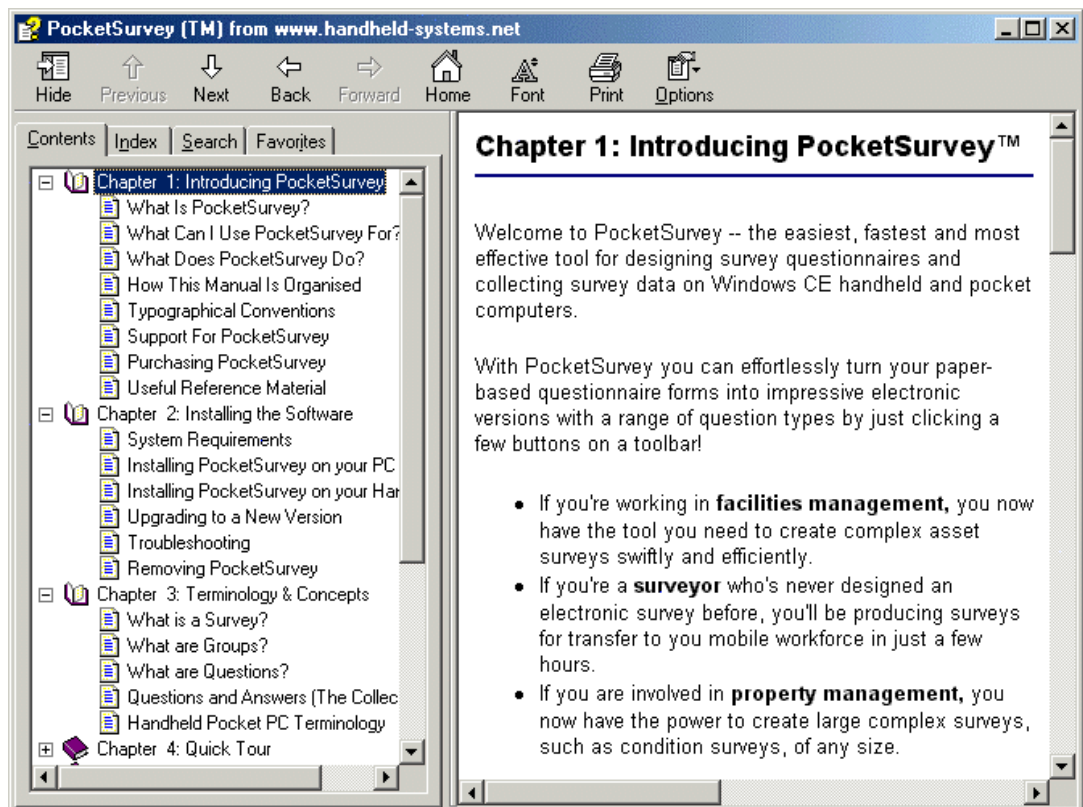
- [Help | User Manual](#)
- [Help | Tutorial](#)
- [Help | Support](#)
- [Help | Purchasing](#)
- [Help | About PocketSurvey](#)

Help | User Manual... Getting Help

The **HELP | USER MANUAL** menu option, shown below, launches a modern style online user manual that is the new standard for Windows programs. When you need information or guidance the online user manual should provide you with the information you require.



A sample screen from the online user manual is shown below.



If you launch the help and experiment with the online manual you will see that you can:

- **Navigate** through the structure using the Previous and Next buttons
- **Expand** chapter heading to reveal the topics inside each chapter.
- **Search** for information using indexed keywords.
- **Search** for any word anywhere in the manual.

- **Scroll** through the information presented on each topic in an area of the screen to the right of the contents list – this is called the topic area.
- **Click on hyperlinks** in the topic area of the screen in the same way you navigate through Internet Web pages.

The online manual appears in a separate window on your screen so you can view the information whilst still working on a design in PocketSurvey.

Context-Sensitive Help

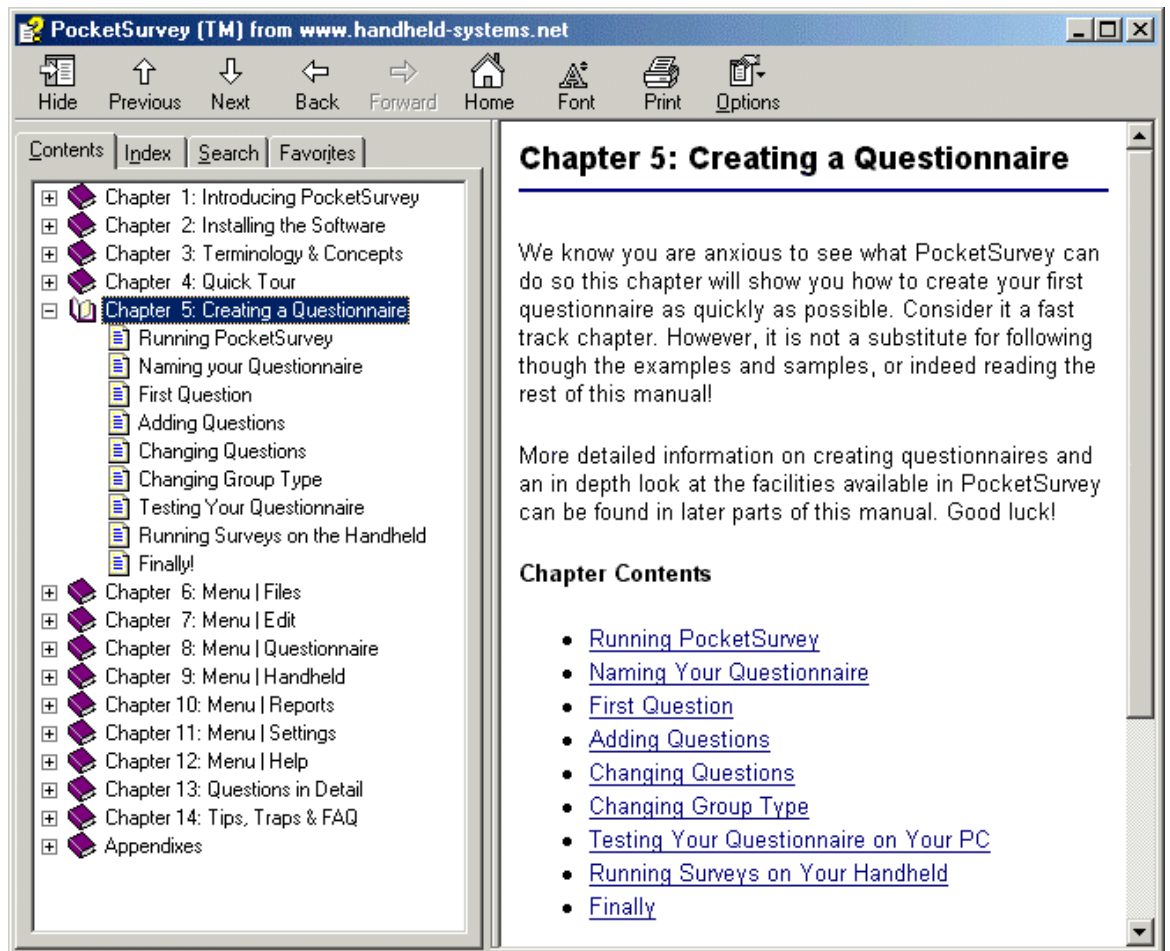
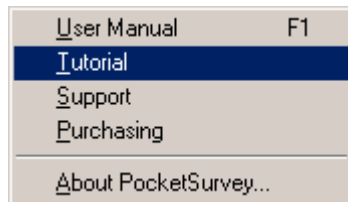
On most screens you will usually find a **HELP** button. If you are having difficulty with a particular screen you can click the help button to launch the online user manual and take you to directly the information related to your current screen. From there you can explore the user manual as described above.

Tip

The shortcut key for displaying the online user manual at any point is **F1**.

Help | Tutorial... Learning PocketSurvey

The **HELP | TUTORIAL** menu option, shown below, launches Chapter 5 of the manual showing you how to create your first questionnaire.

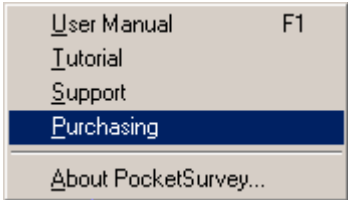


Help | Support

The **HELP | SUPPORT** menu option launches the section the manual showing you what **support options** are available to PocketSurvey users.

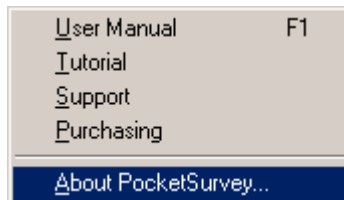
Help | Purchasing

The **HELP | PURCHASING** menu option, shown below, launches the section of the manual showing you **how to purchase PocketSurvey licenses**.



Help | About... About PocketSurvey

The **HELP | ABOUT** menu option, shown below, displays general information about PocketSurvey.



If you need to report a problem with PocketSurvey you should quote the **Build Number** show on the bottom left of the screen. If you wish to visit the PocketSurvey web site click on the link shown in blue.

